

Backhoe Loader



Excavators Buckets	1-4
Jaw Bucket	5
Shovels	6-7
Professional Breakers	8
Contractor Breakers	8.1
Quickhitches	9-10
Hand Held Tools	11-14
Patch Planer	15
Earth Drills	16
HD Pothole Master Sweeper	17
Sweeper Collectors	18
Pallet Forks, Fork Frames & Loadguards	19
Fork Mounted Crane Hook	20
Ripper Tooth	20
Concrete Skips	21
Street Pads	21
Brush Grapples	22
Scrap Grapples	22

JCB
ATTACHMENTS

JCB ATTACHMENTS



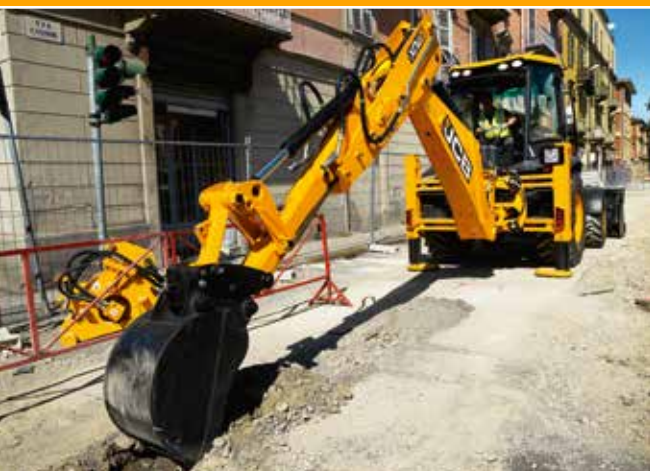
Excavator Buckets

- General Purpose



With over 50 in the range; there is a bucket to suit every application.

- A rolled top section increases structural integrity
- Side plate reinforcement offers additional strength and rigidity
- Replaceable wear parts increase durability and extend the working life
- Pivot pins/kits available to enable quickhitch mounting for increased productivity
- The GP bucket range has been designed using Finite Element Analysis throughout the engineering process



Part number no pins	Outer width mm (in)	Capacity m ³ (yd ³)	Weight kg (lb)
ICX			
333/S9312	230 (9)	0.026 (0.034)	51 (112)
333/S8912	305 (12)	0.038 (0.05)	54 (119)
333/S7350	450 (18)	0.062 (0.081)	59 (130)
333/S8810	600 (24)	0.086 (0.112)	72 (159)
Midi CX			
531/99300	230 (9)	0.028 (0.037)	52 (115)
528/00400	305 (12)	0.04 (0.052)	55 (121)
528/00600	350 (14)	0.048 (0.063)	57 (126)
528/00800	405 (16)	0.057 (0.075)	63 (139)
528/01000	450 (18)	0.065 (0.085)	68 (150)
528/01200	600 (24)	0.091 (0.119)	87 (192)
3CX Compact/2CX			
531/99300	230 (9)	0.028 (0.037)	52 (115)
528/00400	305 (12)	0.04 (0.052)	55 (121)
528/00600	350 (14)	0.048 (0.063)	57 (126)
528/00800	405 (16)	0.057 (0.075)	63 (139)
528/01000	450 (18)	0.065 (0.085)	68 (150)
528/01200	600 (24)	0.091 (0.119)	87 (192)
528/01400	750 (30)	0.117 (0.153)	101 (223)

Part number no pins	Part number with pins	Part number with pins & toeplate	Outer width mm (in)	Capacity m ³ (yd ³)	Weight (excluding pins) kg (lb)
3CX/4CX/5CX					
980/89988	980/A0355	980/A0024	250 (10)	0.054 (0.071)	98 (216)
980/89989	980/A0356	980/A0025	305 (12)	0.069 (0.09)	105 (231)
980/89881	980/A0357	980/A0026	350 (14)	0.081 (0.106)	106 (234)
980/89990	980/A0358	980/A0027	405 (16)	0.103 (0.135)	107 (236)
980/89991	980/A0359	980/A0028	450 (18)	0.12 (0.157)	114 (251)
980/89992	-	-	500 (20)	0.138 (0.181)	121 (267)
980/89993	980/A0360	980/A0029	600 (24)	0.174 (0.228)	136 (300)
980/89994	-	980/A0030	800 (31)	0.248 (0.324)	167 (368)
980/89995	980/A0361	980/A0031	900 (35)	0.286 (0.374)	179 (395)

Optional bucket pin kit 340/00582 is available on 250mm (10in) buckets
 Optional bucket pin kit 340/00584 is available on 305mm (12in) buckets
 Optional bucket pin kit 980/A5083 is available on 405mm (16in) and above buckets
 Optional weld in bucket pin kit 993/36400

Each bucket is a perfect match for the machine, maximising excavator performance through perfect geometry.

- Additional wear strips fitted to the rolled back shell give additional strength and rigidity
- Bolt on teeth
- Produces flat bottom trench

Part number no pins	Outer width mm (in)	Capacity m ³ (yd ³)	Weight kg (lb)
3CX/4CX/5CX			
980/90005	250 (10)	0.054 (0.071)	108 (238)
980/90006	305 (12)	0.069 (0.09)	117 (258)
980/90007	405 (16)	0.103 (0.135)	119 (262)
980/90008	450 (18)	0.12 (0.157)	127 (280)
980/90009	500 (20)	0.138 (0.181)	136 (300)
980/90010	600 (24)	0.174 (0.228)	155 (342)
980/90011	800 (31)	0.248 (0.324)	194 (428)
980/90012	900 (35)	0.286 (0.374)	210 (463)

Optional bucket pin kit 340/00582 is available on 250mm (10in) buckets
 Optional bucket pin kit 340/00584 is available on 305mm (12in) buckets
 Optional bucket pin kit 980/A5083 is available on 405mm (16in) and above buckets
 Optional weld in bucket pin kit 993/36400

Maximum tearout and material retention are key factors to maximise productivity.

- Teeth mounted on weld-on adaptors give extended wear performance in tough conditions
- Additional wear strips fitted to the rolled back shell give additional strength and rigidity

Part number no pins	Outer width mm (in)	Capacity m ³ (yd ³)	Weight kg (lb)
3CX/4CX/5CX			
980/90013	250 (10)	0.04 (0.05)	105 (231)
980/90014	305 (12)	0.06 (0.08)	115 (254)
980/90015	405 (16)	0.075 (0.1)	113 (249)
980/90016	450 (18)	0.09 (0.12)	122 (269)
980/90017	500 (20)	0.1 (0.13)	130 (287)
980/90018	600 (24)	0.12 (0.16)	151 (333)
980/90019	800 (31)	0.17 (0.22)	190 (419)
980/90020	900 (35)	0.24 (0.31)	207 (456)

Excavator Buckets

- Heavy Duty (Ribbed - plus bolt on teeth)



Excavator Buckets

- Heavy Duty (2-piece tooth, weld on adaptor)



Excavator Buckets - Deep Profile



Deep profile buckets can be specified when the job in hand requires greater output.

- Deep profile design provides additional capacity for higher outputs

Part number no pins	Outer width mm (in)	Capacity m ³ (yd ³)	Weight kg (lb)
3CX/4CX/5CX			
980/89980	305 (12)	0.09 (0.12)	110 (243)
980/89981	350 (14)	0.11 (0.14)	117 (258)
980/89982	400 (16)	0.13 (0.17)	124 (273)
980/89983	450 (18)	0.18 (0.24)	135 (298)
980/89984	600 (24)	0.24 (0.31)	156 (344)
980/89985	800 (31)	0.3 (0.39)	186 (410)
980/89986	900 (35)	0.39 (0.51)	207 (456)
980/89987 +	1100 (43)	0.47 (0.61)	229 (505)

+4CX/5CX only.

Excavator Buckets - Ditch Maintenance



Purpose-designed and manufactured to match machine capability, JCB ditch maintenance buckets feature drain holes that reduce weight and density during operation.

- A central reinforcing plate gives added strength and rigidity
- A rolled top section increases structural integrity
- Drainage holes on ditch maintenance buckets allow water to escape, giving a better fill factor



Part number no pins	Part number with pins	Outer width mm (in)	Capacity m ³ (yd ³)	Weight (excluding pins) kg (lb)
1CX				
980/65600	-	1000 (39)	0.08 (0.1)	92 (203)
Midi CX				
980/05400	-	1200 (47)	0.12 (0.16)	116 (256)
3CX Compact/2CX				
980/05400	-	1200 (47)	0.12 (0.16)	116 (256)
3CX/4CX/5CX				
980/86061	980/A0362	1520 (60)	0.215 (0.28)	150 (331)
980/86060	-	1800 (71)	0.26 (0.34)	172 (379)

Part number no pins	Part number with pins	Outer width mm (in)	Capacity m ³ (yd ³)	Weight (excluding pins) kg (lb)
3CX/4CX/5CX				
980/A1781	980/A1780	1524 (60)	0.215 (0.28)	214 (472)

Grading buckets: the perfect tool for bank forming and landscaping.

Part number no pins	Outer width mm (in)	Capacity m ³ (yd ³)	Weight kg (lb)
3CX/4CX/5CX			
980/A2114	1520 (60)	0.215 (0.28)	150 (331)
980/A2113	1800 (71)	0.26 (0.34)	172 (379)

The JCB tilting grading bucket allows operation without the need to keep re-positioning the machine. It is ideal for banks or batters.

- Left and right hand tilting for forming banks and batters
- Rolled top section increases structural integrity
- A central reinforcing plate gives added strength and rigidity

Part number no pins	Outer width mm (in)	Capacity m ³ (yd ³)	Weight kg (lb)
3CX/4CX/5CX			
980/89975	1520 (60)	0.16 (0.21)	340 (750)

The tapered ditching excavator bucket is the ideal tool to help maintain ditches and drains.

- Double box section cross beam increases structural integrity and prolongs service life
- Replaceable wear parts increase durability and extend the working life
- Enables simple formation of ditches and drains

Part Number no pins	Top Outer width mm (in)	Bottom Outer width mm (in)	Angle in degrees	Capacity m ³ (yd ³)	Weight kg (lb)
3CX/4CX/5CX					
531/02700	1676 (66)	381 (15)	30	0.06 (0.08)	185 (408)
537/16100	1067 (41.2)	305 (12)	60	0.1 (0.13)	111 (245)

Excavator Bucket

- Ditch Maintenance with bolt-on toeplate

Excavator Buckets

- Grading



Excavator Buckets

- Tilting Grading
(Requires compatible hydraulic service)



Excavator Buckets

- Tapered Ditching





Jaw Bucket
 (Requires compatible hydraulic service.
 Not compatible with excavator quickhitch)

The JCB jaw bucket offers two-in-one versatility – a digging bucket plus a jaw for grabbing awkward loads.

- Two attachments in one, a standard bucket and a powerful hydraulic jaw
- JCB designed for maximum compatibility, performance and durability
- Additional wear strip provides increased strength and resistance to abrasion



Part number no pins	Outer width mm (in)	Capacity m ³ (yd ³)	Weight kg (lb)
3CX/4CX/5CX			
531/19800	600 (24)	0.2 (0.26)	280 (617)

Each shovel is a perfect match for the machine, maximising loader performance through perfect geometry.

- JCB designed for maximum compatibility, performance and durability
- Bolt-on toeplate and tooth options

Part number	Mount	Outer width mm (in)	Capacity m ³ (yd ³)	Weight kg (lb)
Midi CX				
335/11770	Quickhitch (skid steer)	1830 (72)	0.45 (0.59)	153 (337)
2CX				
528/01600	Quickhitch - 2CX mkII	1850 (73)	0.6 (0.78)	283 (624)
3CX/4CX/5CX				
125/36700	Direct 3CX and 3DX only	2235 (88)	1 (1.31)	360 (794)
125/36800	Direct 3CX and 4CX	2337 (92)	1.1 (1.44)	373 (822)
126/03149	Quickhitch 3CX and 4CX (USA only)	2337 (92)	1.1 (1.44)	480 (1058)
126/03151	Quickhitch 3CX and 4CX (USA only)	2438 (96)	1.2 (1.57)	527 (1162)

- Heavy duty construction for hard digging applications

Part number	Mount	Outer width mm (in)	Capacity m ³ (yd ³)	Weight kg (lb)
3CX/4CX/5CX				
126/00186	Quickhitch 3CX and 4CX	2337 (92)	1.1 (1.44)	485 (1069)

General Purpose Shovels



Heavy Duty Shovel



Side Tip Left Hand Shovels (Requires compatible hydraulic service)

- Designed for safe and accurate placement of infill materials
- Easy to use and simple to control material flow

Part number	Pickup	Width mm (in)	Capacity struck m ³	Capacity heaped m ³	Weight kg
2CX					
980/84105	Quick hitch - 2CX mkII	1850 (72.8)	0.49	0.62	499
980/88255	Direct - 2CX mkII	1950 (76.8)	0.52	0.65	510
980/90165	Direct - 2CX mkIII	1850 (72.8)	0.49	0.62	500



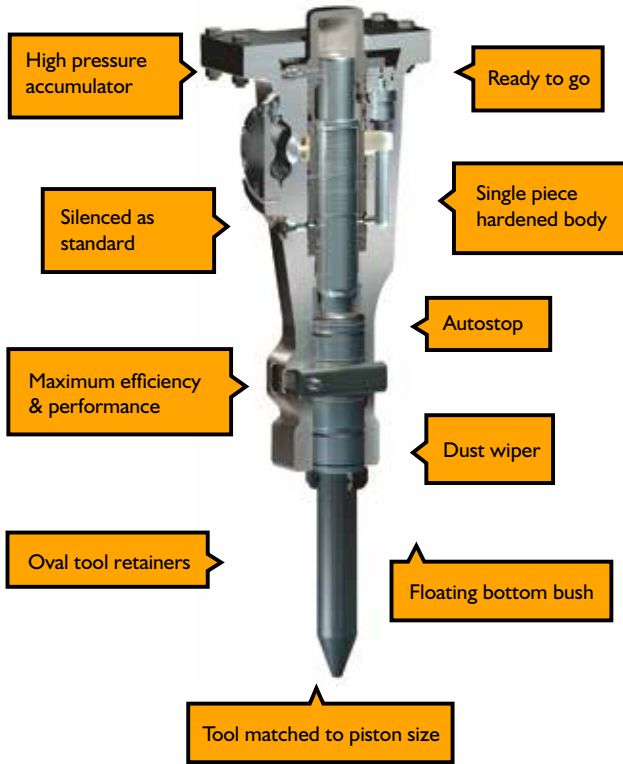
6-in-1 Shovels

- JCB designed for maximum compatibility, performance and durability
- Increases machine versatility, dozing, loading, digging, grabbing, spreading and grading from one unit

Part number	Pickup	Width mm (in)	Capacity m ³	Weight kg
1CX				
290/72023	Quick hitch (skid steer)	1550 (61)	0.27	240
512/05100	Quick hitch (skid steer)	1550 (61)	0.27	240
Midi CX - Requires compatible hydraulic service				
128/16792	Quick hitch (skid steer)	1830 (72)	0.45	331
2CX - Requires compatible hydraulic service				
528/00100	Quick hitch - 2CX mkII	1850 (72.8)	0.60	419
528/02700	Direct - 2CX mkII	1850 (72.8)	0.60	448
128/12142	Direct - 2CX mkIII	1850 (72.8)	0.60	457
3CX Compact				
128/G2968	Direct Mount	2000 (78.7)	0.66	415
128/F6356	Quick Hitch mkII	2000 (78.7)	0.66	410
3CX/4CX/5CX - Requires compatible hydraulic service - Fork kits available				
128/C1010	Direct 3CX/4CX	2337 (92)	1.10	729
128/C1026	Direct 3CX/4CX	2337 (92)	1.20	747
128/C1037	Direct 3CX/4CX	2235 (88)	1.00	715
128/C1052	Direct 3CX/4CX/5CX	2438 (96)	1.30	815
128/C1057	Quick hitch 3CX/4CX	2337 (92)	1.10	732
128/C1062	Quick hitch 3CX/4CX	2337 (92)	1.20	754
128/C1066	Quick hitch 4CX/5CX	2438 (96)	1.30	822



The professional breaker range has been designed and built to withstand more arduous breaking tasks. These breakers are able to power through even the toughest of applications.



- Supplied 'ready to go' with hoses, hanger bracket, moil and chisel tools. No hanger brackets or hoses on universal models
- Solid body design provides maximum strength with lower weight
- Durable design with low maintenance accumulator helps reduce maintenance costs
- Exact match of tool and piston diameter maximises blow energy transfer
- Class leading power to weight ratio
- Energy not absorbed by the material being broken is used to lift the tool which pressurises the accumulator ready for the next blow. Reusing this energy increases impact force and reduces running costs
- Silenced as standard to reduce noise pollution

Professional Breakers



Breaker tools	HMI66Q	HM266Q	HM386Q	HM496Q	
Moil	331/52394	333/C8899	331/52461	331/52501	
Chisel (Cross cut/H)	331/52395	-	332/G2798	-	
Wide transverse chisel (Wedge in line /V)	331/52397	331/52499	331/52468	-	
Blunt (End flat)	331/52398	333/C8903	331/52493	331/52505	
Wide chisel	331/53296	331/52498	331/52467	331/52504	
Asphalt cutter	331/52399	333/C8904	332/G2801	-	
Asphalt cutter transverse	331/52400	333/C8905	332/G2803	-	
X point	-	333/C8900	-	-	
Narrow chisel	-	333/C8901	331/52464	331/52503	
X chisel	-	333/C8902	332/G2800	-	
X moil	-	-	332/G2795	-	

Part number	Pin kit part number	Pickup mount	Pin size	Operating weight kg	Blow rate bpm	Tool diameter mm	Oil flow l/min	Pressure bar	Impact energy j	Noise level dBA
HMI66Q - 3CX Compact/2CX										
980/A6666	-	Side	32	162	1020-1750	50	40-60	100-150	252	115
HM266Q - 3CX Compact/2CX										
980/A6753	-	Side	32	224	720-1400	65	42-75	100-150	376	118
HM386Q - 3CX/4CX/5CX										
980/A3478	980/A5083	Side	45	360	720-1380	80	60-100	100-150	600	121
HM496Q - 3CX/4CX/5CX										
980/A9977	980/A5083	Side	45	441	540-1260	95	65-110	100-150	855	124

Universal options - No hanger bracket or hoses							
Part number	Operating weight kg	Blow rate bpm	Tool diameter mm	Oil flow l/min	Pressure bar	Impact energy j	Noise level dBA
HMI66Q - 1.2-3.2 Tonnes							
980/A7840	162	1020-1750	50	40-60	100-150	252	115
HM266Q - 2.8-6.0 Tonnes							
980/A7570	224	720-1400	65	42-75	100-150	376	118
HM386Q - 5.0-8.5 Tonnes							
980/A3481	360	720-1380	80	60-100	100-150	600	121
HM496Q - 6.5-13.0 Tonnes							
980/A6334	441	540-1260	95	65-110	100-150	855	124

Contractor Breakers



Our contractor breaker range has been designed where overall project cost is key, they offer unrivalled value for money to the rental and construction sectors. These versatile breakers are fully approved and tested for flow, pressure, compatibility and fitment as part of every machine development programme we carry out.

- Accumulators ensure that machines are completely protected from hydraulic pressure spikes
- Available as side mount, top mount or universal for non JCB machinery
- Moil & chisel tool provided as standard
- Vibro isolation rubber buffers absorb repercussion from hammering to reduce damage to the carrier machine
- Maintained using hand held greasing gun
- Comes with gas charging kit unless stated otherwise

Breaker tools

	HM018T	HM026T	HM033T	HM049T
Moil	334/C6976	334/G8302	332/A3062	400/C2450
Chisel (Cross cut/H)	334/C6978	334/G8335	332/A3063	400/C2451
Transverse chisel (Wedge in line / V)	335/H7422	334/G8352	332/A3064	400/C4253
Conical moil	-	334/G8299	332/A3061	-
Blunt (End flat)	335/H7423	334/G8358	332/A3065	400/C2454

Part number	Pin kit part number	Pickup mount	Pin size mm	Operating weight kg	Blow rate - Long stroke bpm	Tool diameter mm	Oil flow l/min	Pressure bar	Impact energy j	Noise level dBA
HM018T - 1CX/1CXT										
980/B0263	-	Side	35	165	600-1500	57	23-70	90-120	560	125
HM026T - 3CX Compact/2CX/Midi CX										
980/B0256	-	Side	32	234	380-1000	70	29-65	110-165	1072	125
HM033T - 3CX/4CX/5CX										
980/B0331	980/A5083	Side	45	415	380-900	75	34-76	120-165	1393	120
980/B0250*	980/A5083	Side	45	359	380-900	75	34-76	120-165	1393	120
HM033T - HD110W/8052 - 8086 65R - 100C										
980/B0251	980/A5083	Top	45	403	380-900	75	34-76	120-165	1393	120
HM049T - 4CX/5CX										
980/B0105	980/A5083	Side	45	420	400-800	80	38-85	140-170	1806	125

Universal options - No hanger bracket or hoses

Part number	Operating weight kg	Blow rate - Long stroke bpm	Tool diameter mm	Oil flow l/min	Pressure bar	Impact energy j	Noise level dBA
HM018T - 1.5-4.0 Tonnes							
980/B0262	187	600-1500	57	23-70	90-120	560	125
HM026T - 3.0-6.5 Tonnes							
980/B0255	260	380-1000	70	29-65	110-165	1072	125
HM033T - 4.5-8.0 Tonnes							
980/B0330	330	380-900	75	34-76	120-165	1393	120
980/B0253*	330	380-900	75	34-76	120-165	1393	120

*No gas kit

-The impact energy figures are based on calculations and may not be representative to application

Quickhitches

- Excavator

The use of a quickhitch allows fast changeover of attachments, keeping the machine hard at work and saving downtime every shift.

JCB hitches are the only products on the market which are fully approved by JCB for use on JCB Backhoe Loaders.

The range includes both manual and hydraulic hitches which exceed current and anticipated legislation.

1CX/2CX/Midi CX/3CX/4CX/5CX (Manual)

- Increases safety and reduces operator effort when changing buckets and attachments
- Durable design, with hardened steel jaws that keep wear to a minimum
- Mechanically operated with spring loaded lock released by use of a tommy bar
- High visibility safety lock pin prevents accidental loss of bucket or attachment

3CX/4CX/5CX (Hydraulic)

- Allows speedier and easier interchange of attachments
- Two independent locking mechanisms ensure the attachment is held safely in all scenarios
- CE marked for JCB Backhoe Loaders meeting all current and future legislation
- Fully controlled from within the cab with boom position sensors to ensure operation within a safe zone
- No additional hoses within kingpost
- Full integration with the JCB Backhoe Loader



Part number	Operation	Weight kg (lb)	Pin Size mm (in)
1CX			
980/88451	Manual	37 (82)	35 (1.38)
2CX			
980/A4618	Manual	55 (121)	32 (1.26)
Midi CX			
980/A4618	Manual	55 (121)	32 (1.26)
3CX/4CX/5CX			
980/88833	Manual	95 (209)	44.45 (1.75)
980/A4955	Hydraulic*	72 (159)	44.45 (1.75)

*Requires compatible hydraulic service.

As with JCB excavator hitches all our loader end hitches are designed by JCB for JCB machines, providing the utmost safety and peace of mind. Manual and hydraulic options are available and exceed current and expected legislation.

Quickhitches - Loader

1CX/Midi CX/3CX/4CX/5CX (Manual)

- Ensures rapid swap of attachments to maximise productivity
- Operator can see that locking is fully engaged

2CX/3CX/4CX/5CX (Hydraulic)

- Operator can see that locking is fully engaged
- Fully controlled from within the cab
- Reduces downtime, thanks to quick and efficient interchange of attachment

Part number	Operation	Weight kg (lb)
1CX		
Standard equipment	Manual	-
2CX		
980/A0825+	Hydraulic*	148 (326)
Midi CX		
Standard equipment	Manual	-
3CX/4CX/5CX		
980/89487	Manual	209 (461)
980/89488	Hydraulic*	223 (492)
980/89808	Hydraulic with Integral Forks*	308 (679)
126/03126	Q-fit agricultural attachment pick-up, hydraulic operation*	165 (364)

* Requires compatible hydraulic service. + Only for MkIII machines. Pick-up is MkII quickhitch shovels.



Hand Held Tools

JCB has a comprehensive range of hydraulic tools which have all been designed for maximum productivity.

Proven in the field, they include breakers, pumps, an earth drill, a disc cutter, drills and an impact wrench. All manufactured to JCB's usual exacting standards.



All rated EHTMA cat "C", 20 l/min (5.3 usgpm)

1CX Requires Hand Held Tool Circuit with chassis connection points

2CX Requires Hand Held Tool Circuit with chassis connection points

3CX/4CX/5CX Requires Hand Held Tool Circuit with chassis connection points or hose reel option

Demolition Pick (D Handle)

- Light demolition and construction applications
- Ideal for trenching, tunnelling and lateral work

Demolition Pick (T Handle)

- Small lightweight hammer designed for light to medium-duty breaking

Part number	Model	Tool size mm (in) hex	Weight kg (lb)	Blow rate bpm	Vibration level m/s ² (ft/s ²)
929/30800	D handle	22 (7/8) Latch retainer	15 (33)	1500	6 (20)
929/12900	D handle	22 (7/8) Screw retainer	15 (33)	1500	6 (20)
929/30900	T handle	22 (7/8)	15 (33)	1500	7.5 (25)

Breaker

- Easy to use hand-held breakers more productive than pneumatic equivalents
- A low vibration model uses patented suspension to minimise hand arm vibration

Part number	Model	Tool size mm (in) hex	Weight kg (lb)	Blow rate bpm	Vibration level m/s ² (ft/s ²)
929/92500	HM22	22 (7/8)	21 (46)	1500	3.4 (11)
929/92600	HM22	25 (1)	21 (46)	1500	3.4 (11)
929/92400	HM25	32 (1 1/4)	25 (55)	1500	4 (13)
929/A2613	HM25LV	32 (1 1/4)	27 (60)	1500	1.6 (5.3)
929/92700	HM29	32 (1 1/4)	29 (64)	1500	5 (16)

Pick and Breaker Tool Options

Model mm (in)	Part number 22mm (7/8 in) Tools	Part number 25mm (1in) Tools	Part number 32mm (1 1/4 in) Tools
Rammer pad. Requires stem	PP/7314	PP/7314	995/32914
Rammer Stem	PP/7320	PP/7313	995/32928
Clay Spade	PP/1360	PP/7316	995/32927
Asphalt Cutter 76 (3)	PP/1359	PP/7312	995/32920
Asphalt Cutter 125 (5)	PP/7321	PP/7315	995/32921
Asphalt Cutter 115 (4 1/2)	-	-	995/32922
Chisel	PP/1358	PP/7311	995/32916
Moil	PP/1357	PP/7310	995/32915

Disc Cutter

- Well balanced, quiet unit designed for use with most materials including metals, concrete and stone
- Low maintenance, quiet hydraulic design
- Flow regulator prevents over-speeding
- Tooth belt drive and fully enclosed working parts
- Supplied with one stone cutting disc and one metal cutting disc
- The disc is protected by a steel guard, adjustable to any of three positions
- Removable handle for right or left hand operation

Part number	Cutter diameter mm (in)	Speed max. rpm	Weight kg (lb)	Vibration level m/s ² (ft/s ²)
5024	300 (11.8)	6000	10 (22)	3.67 (12)

Arbour diameter 22mm.

Earth Drill

- Thanks to its hydraulic drive, this unit has more torque than most petrol engine units, making it strictly a two-man operation
- Low weight makes it portable and manoeuvrable
- Quiet in operation
- Reversible for easy retraction
- Automatic return-to-neutral controller for added safety

Part number	Max. flight dia. mm (in)	Max. hole depth mm (in)	Torque Nm (ft. b)	Speed rpm	Weight kg (lb)
929/13400	305 (12)	1220 (48)	295 (218)	136	15 (33)

Flight Options

Part number	Size mm (in)	Length mm (in)
929/13407	100 (4) diameter	1200 (47)
929/13408	150 (6) diameter	1200 (47)
929/13409	200 (8) diameter	1200 (47)
929/13410	250 (10) diameter	1200 (47)
929/13411	305 (12) diameter	1200 (47)
929/13428	610 (24) Extension	1200 (47)

Hand Held Tools



Hand Held Tools



Hydraulic Drill

- Reversible drive
- Heat insulated handle
- The lightweight, compact design makes the drill a very manageable tool

Part number	Speed rpm	Max. Bit Diameter mm (in)	Chuck System	Weight kg (lb)
5117	1000	steel: 13 (1/2), wood: 27 (1 1/8)	Key type	2.7 (6)

Diamond Core Drill

- Side handle for ease of use
- Rugged hydraulic motor allows prolonged use
- Water hose port for dust suppression and cooling
- Can be used under water for extra versatility

Part number	Speed rpm	Bit diameter mm (in)	Weight kg (lb)
929/13300	2400	15 (0.6) - 35 (1.4)	8 (18)
929/13200	600	40 (1.6) - 125 (5)	8 (18)

Impact Drill

- Built-in slip clutch guards against over-torque
- Reversible for easy bit retraction
- Integral depth gauge and auxiliary handle are easily removed for improved access in tight areas

Part number	Speed rpm	Blow rate bpm	Max. Bit Diameter mm (in)	Chuck System	Weight kg (in)
5118	805	3515	steel: 13 (1/2), wood: 27 (1 1/8), concrete: 19 (3/4)	SDS PLUS	3.9 (8.6)

Impact Wrench, 3/4 in drive

- Adjustable torque control
- Compact, powerful twin hammer design
- Needle bearing, rugged gear motor drive

Part number	Speed rpm	Weight kg (lb)
5114	2700	5.6 (12.4)



Trash Pump

- Rugged, durable submersible trash pump used for pumping water with mud, leaves, twigs, sand, sewage and sludge in it
- Used to handle matter that would clog most other pumps

Part number	Maximum Discharge lpm (usgpm)	Maximum Head m (ft)	Discharge Port mm (in BSP)	Weight kg (lb)
980/A4874	2160 (517)	10.5 (34)	100 (4)	32 (71)

Submersible Pump

- Self-priming with high power-to-weight ratio
- Aluminium body for light weight and a corrosion free life
- Maintenance free

Part number	Maximum Discharge lpm (usgpm)	Maximum Head m (ft)	Discharge Port mm (in BSP)	Weight kg (lb)
929/03900	700 (185)	18 (60)	100 (4)	8 (18)

Pump Hose Options

Part number	Description m (ft)
929/34317	5 (16) screw on lay flat hose
980/90632	10 (32) Cam-loc lay flat hose (650/10301 required)
650/10301	Screw on Cam-Loc male fitting

Hand Held Tools



Patch Planer



- A high speed planer which creates a clean-cut trench for the reinstatement of material
- Visual aids to show the drum width and centre to the operator and banksman
- Capable of planing both asphalt and concrete with specific picks. Asphalt picks are already factory fitted
- Reuse milled material for backfilling trenches
- Stone guard fitted for safety to help prevent material being ejected out of the side of the planer
- Hydraulic protection to prevent accidental reverse operation

Part number	Drum width mm	Drum depth mm	Min. distance from curb mm	Swinging support rotation angle °	Operating weight kg	Required oil flow l/min	Required oil pressure bar
PL 300 3CX Compact	300	0-100	50 (25*)	127	390	45-75	300-180
PL 350 3CX	350	0-120	50 (27*)	118	530	55-90	300-180

For accurate drilling to a variety of diameters and depths, the JCB earth drill range is effective in the erection of fencing, poles, anchors, road signs and planting trees.

- For accurate and precise drilling of fence and post holes
- Complete with hanger bracket and connection hoses
- Heavy duty gearbox and compact, powerful drive head

Power Head

Part number	Max. flight dia. mm (in)	Torque Nm (ft.lb)	Weight kg (lb)
1CX			
980/A4321	760 (30)	3500 (2580)	105 (230)
3CX Compact/Midi CX/2CX			
980/A4327	900 (36)	6000 (4425)	110 (240)
3CX/4CX/5CX			
980/A3596	900 (36)	6000 (4425)	110 (240)

Flight Options

Part number	Diameter mm (in)	Weight kg (lb)
Standard Flights: 1200mm (48in) long, bolt-on teeth, for light to moderate ground conditions		
980/A2019	160 (6)	19 (42)
980/A2021	230 (9)	39 (86)
980/A2023	300 (12)	52 (115)
980/A2025	380 (15)	60 (132)
980/A2027	460 (18)	80 (176)
980/A2028	600 (24)	12 (26)
980/A2029	760 (30)	14 (31)
980/A2030	900 (36)	20 (44)
Heavy Duty Flights: 1200mm (48in) long, socketed teeth, for difficult ground conditions: compacted soils, heavy clay, asphalt, frozen ground and fracturable rock		
980/A2031	230 (9)	45 (99)
980/A2032	300 (12)	58 (128)
980/A2034	380 (15)	63 (139)
980/A2035	460 (18)	92 (203)
980/A2037	600 (24)	124 (273)
980/A2038	760 (30)	141 (311)
980/A2039	900 (36)	195 (430)
Rock Duty flight: 1200mm (48in) long, carbide bullet style teeth, for solid, fracturable rock, frozen ground and compacted soils		
980/A2040	300 (12)	49 (108)
980/A2042	460 (18)	91 (201)
Adjustable extension bar, up to 1000mm (40in)		
980/A2043	-	-

Earth Drills
(Requires compatible hydraulic service)





HD Pothole Master Sweeper



A sweeper collector ensures thorough surface preparation, reduces clean up time and provides a tidy safe worksite. The offset design allows work to be carried out on a single carriageway, with no disruption to traffic flow.

- The brush is of a large diameter for high performance, with 50/50 steel polypropylene bristles to provide a longer life
- The sweeper design allows constant pressure on the broom, ensuring that all debris, dirt and water is collected from any width of patch
- Offset carriage and right hand motor provides the ability to sweep up to the kerb edge
- The sweeper itself is the correct width to allow the waste to be emptied over the rear tailgate of a truck
- The high capacity hopper extends working time

Part number	Operating width mm (in)	Hopper capacity m ³ (yd ³)
3CX/4CX/5CX (Requires loader quickhitch and hydraulic service. For continuous operation requires 5/8 in loader auxiliary pipework)		
980/A6600*	1775 (69)	0.33 (0.43)

Sprinkler option 980/A6601 (only fits Pothole Master Builds)
 *Highway maintenance decals fitted as standard on the sweeper.

For highly effective cleaning of your job site, JCB offer a range of four sweeper collectors to suit all sizes of Backhoe Loaders, to further increase the versatility of the machines.

Sweeper Collectors



ICX

- Heavy duty canopy gives added strength to take the knocks of every day use
- Large diameter steel and polypropylene brush segments for superior finish
- Sweeping and Hopper emptying hydraulically operated from the cab
- Available with dust suppression sprinkler and/or gutter brush options

2CX/3CX/4CX/5CX

- Heavy duty canopy gives added strength to take the knocks of every day use
- Large diameter steel and polypropylene brush segments for superior finish
- Sweeping and Hopper emptying hydraulically operated from the cab
- Available with dust suppression sprinkler and/or gutter brush options
- Floating frame system automatically follows the ground contour maintaining sweeper output

Part number	Model	Fits	Operating Width mm (in)	Hopper Capacity m ³ (yd ³)
ICX/ICXT				
980/A1857	SC150	-	1525 (60)	0.46 (0.6)
SC150 options				
980/A4677	Gutter brush, right or left hand fitting		-	-
980/A4668	Sprinkler kit		-	-
2CX				
980/90515	SC210	2CX Quickhitch, MkII pick-up	2100 (83)	0.25 (0.33)
980/90516	SC210 with sprinkler	2CX Quickhitch, MkII pick-up	2100 (83)	0.25 (0.33)
980/89012	Mounting frame		-	-
3CX/4CX/5CX (Requires 5/8 in loader auxiliary pipework for continuous operation)				
980/90507	SC240	Requires mounting frame	2400 (95)	0.32 (0.42)
980/90508	SC240 with sprinkler	Requires mounting frame	2400 (95)	0.32 (0.42)
SC240 Mounting frame options				
980/90417	Quickhitch		-	-
980/90418	Pallet forks		-	-
980/90419	Q-fit agricultural quickhitch		-	-
SC210 and SC240 options				
980/89159	Gutter brush, left hand		-	-
980/A3292	Gutter brush, right hand		-	-



Pallet Forks, Fork Frames and Loadguards

A range of additional attachments are available to enhance the Backhoe Loaders versatility and productivity, including pallet forks available with a fork frame and load guards.

- Extends machine utilization by loading, unloading and stacking pallets and brick and block packs in a safe manner
- Adjustable fork spacing allow use of the safest possible loading points
- Accepts industrial Class 2 attachments
- Load guard option gives protection to the driver and machine, and extra load stability

Part number		Class	Length mm (in)	Width mm (in)	Thickness mm (in)
1CX/Midi CX/1CXT					
528/52000	Fork Frame	2	-	-	-
332/S2533	Forks	2B	1050 (41)	80 (3.1)	40 (1.6)
528/52100	Load Guard	-	-	-	-
2CX					
335/04008	Fork Frame quickhitch mounted, MkIII pick-up	2	-	-	-
528/05100	Fork Frame quickhitch mounted, MkII pick-up	2	-	-	-
333/C6894	Forks	2B	1070 (42)	100 (4)	45 (1.8)
333/T0061	Forks	2B	1200 (47)	100 (4)	45 (1.8)
980/I4300	Forks	2B	1200 (47)	100 (4)	35 (91.4)
3CX/4CX/5CX					
980/07200	Fork Frame quickhitch mounted	2	-	-	-
123/01374	Forks	2B	1220 (48)	100 (4)	45 (1.8)
980/I4200	Load Guard	-	-	-	-

Fork mounted design provides safe lifting using a machine fitted with pallet forks. Crane hook secured by retention pins to maximise safety.

- Held secure at heel of forks
- Swivelling hook

Part number	Description
545/70200	Fork Mounted Frame Hook

Fork Mounted Crane Hook



For breaking hard surfaces, the ripper tooth can quickly be mounted on the backhoe excavator with or without a quickhitch.

- Breaks up hard surfaces such as frozen or compacted earth, concrete or tarmac
- Replaceable tip for even longer service life

Part number	Description
3CX/4CX/5CX	
990/81700	Ripper Tooth

Ripper Tooth



Concrete Skips

Allows the operator to deliver concrete safely and accurately. Large 500ltr capacity.



- Lever operated discharge gate allows controlled release of concrete
- Low profile version ideal for working within restricted heights
- Fork pockets allow side or rear pick-up

Part number		Style	Capacity l (yd ³)
3CX/4CX/5CX			
980/A3196	Fork or Crane Hook mounted	Standard	500 (0.65)
980/A3752	Fork only mounted	Low profile	500 (0.65)

Street Pads

Designed to minimise damage to tarmac with simple installation.

- Protects vulnerable surfaces from damage
- Hard wearing, durable polyurethane

Part number	Description
3CX/4CX/5CX	
980/88215	Fitted to stabiliser feet



